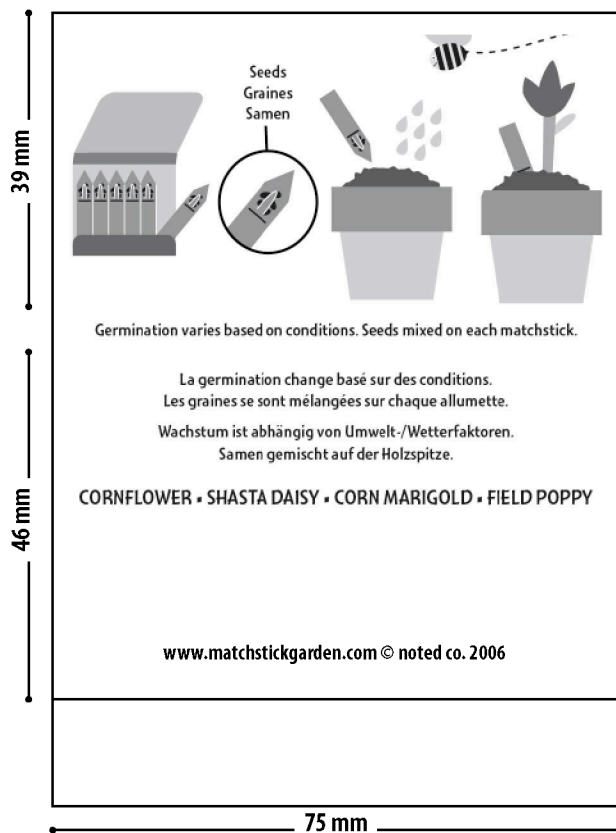


### Matchstick Garden Custom Pricing

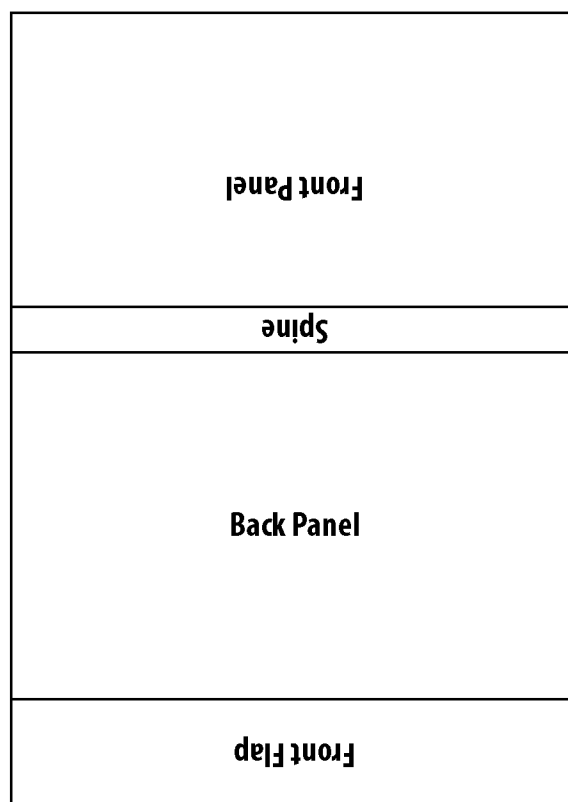
Quantity	5,000	10,000	25,000	50,000	100,000
4 color	\$1.85	\$1.65	\$1.15	\$.85	\$.65
Set-up Fee	\$200				
Lead Time	Please allow 6 weeks from artwork approval to delivery.				
Terms	Payment required in advance. FOB Flemington, NJ 08822.				
Packaging	Packed in cartons of 1000 matchstick gardens, bulk in plastic bags. Cartons are 16 x 11 x 11" and weigh 10 lbs.				

### Matchstick Garden Custom Design Template

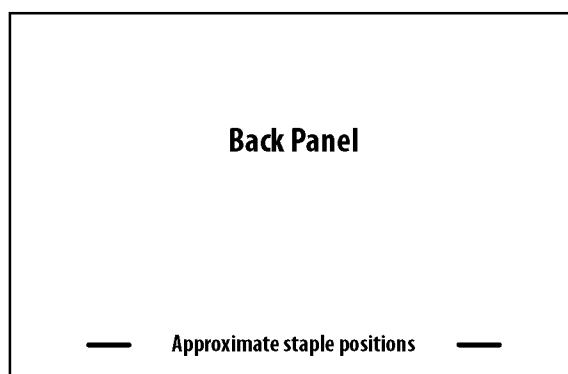
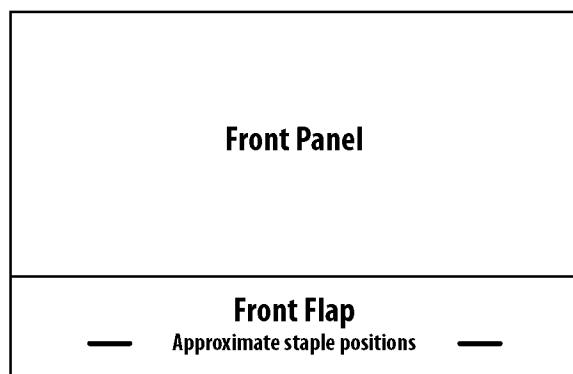
#### INSIDE COVER LAYOUT



#### OUTSIDE COVER LAYOUT



#### FINISHED MATCHSTICK GARDEN





55 washington street suite 818  
brooklyn ny 11201 usa  
1-800-600-7216  
+1-718-855-8533  
WWW.NOTEDCO.COM

## **ARTWORK SUBMISSION FOR MATCHSTICK GARDEN CUSTOMS:**

Please send artwork with a confirmation of specifications, i.e. how many colors it will be printing, any pms colors used, etc

Please send CMYK artwork in one of these three formats:

- Pdf x-1A document, fonts embedded or converted to outlines, cmyk color formatting with any spot colors or rgb converted to process. Please included crop and bleed marks (make sure to allow for bleed) and make sure it is formatted as pdf x-1A.
- Illustrator .eps document with fonts converted to outlines, cmyk formatted. Please allow for bleeds. Please include any placed artwork, or embed images in the file.
- Indesign document, with all fonts converted to outlines or collected for output and sent along with the original document, plus all graphic links. Please ensure that all raster graphics are at least 300 dpi and not used above 120%. Bitmap images should be 1200 dpi, used at 100%. Please allow for bleeds, and make sure that all placed artwork and text are CMYK format.

If you are intending to submit a file in a different format, or if you will be using special PMS spot colors, please contact us in advance for more detailed information on a case by case basis.